

PRODUCTO INTERNO BRUTO TRIMESTRAL POR SECTOR ECONOMICO
(MILLONES DE PESOS A PRECIOS DE 2003)

AÑO TRIMESTRE	TOTAL NACIONAL a/		IMPUESTOS NET. DE SUB.	AGROPEC., SILV. Y PESQ.		INDUSTRIAL		SERVICIOS		CARGO SERV. BANC. IMP. 1/
	PIB	VAR. %		PIB	VAR. %	PIB	VAR. %	PIB	VAR. %	
2003	7,555,803.5	1.3	393,030.3	285,751.5	2.9	2,354,137.0	0.8	4,643,272.3	1.5	-120,387.3
I	7,367,208.0	3.6	383,220.0	268,302.0	1.2	2,316,145.0	3.9	4,519,338.0	3.5	-119,797.0
II	7,539,839.0	0.2	392,200.0	290,165.0	3.1	2,355,471.0	-0.5	4,624,500.0	0.5	-122,497.0
III	7,535,265.0	0.2	391,962.0	269,379.0	3.1	2,364,433.0	-1.0	4,627,821.0	0.7	-118,329.0
IV	7,780,902.0	1.4	404,739.0	315,160.0	4.2	2,380,499.0	0.9	4,801,430.0	1.6	-120,926.0
2004	7,861,678.8	4.0	408,751.3	292,805.8	2.5	2,441,720.5	3.7	4,854,170.0	4.5	-135,768.8
I	7,619,234.0	3.4	396,146.0	287,350.0	7.1	2,390,527.0	3.2	4,666,231.0	3.3	-121,020.0
II	7,822,461.0	3.7	406,712.0	299,113.0	3.1	2,431,541.0	3.2	4,817,227.0	4.2	-132,131.0
III	7,871,003.0	4.5	409,236.0	264,575.0	-1.8	2,468,033.0	4.4	4,874,063.0	5.3	-144,905.0
IV	8,134,017.0	4.5	422,911.0	320,185.0	1.6	2,476,781.0	4.0	5,059,159.0	5.4	-145,019.0
2005	8,113,679.0	3.2	422,240.0	285,239.5	-2.6	2,511,223.8	2.8	5,057,170.3	4.2	-162,194.8
I	7,775,430.0	2.1	404,637.0	280,783.0	-2.3	2,398,169.0	0.3	4,840,888.0	3.7	-149,048.0
II	8,119,230.0	3.8	422,529.0	287,385.0	-3.9	2,542,869.0	4.6	5,029,180.0	4.4	-162,734.0
III	8,140,956.0	3.4	423,660.0	271,803.0	2.7	2,525,699.0	2.3	5,086,618.0	4.4	-166,822.0
IV	8,419,100.0	3.5	438,134.0	300,987.0	-6.0	2,578,158.0	4.1	5,271,995.0	4.2	-170,175.0
2006	8,513,900.0	4.9	443,352.3	303,305.3	6.3	2,655,416.3	5.7	5,306,879.8	4.9	-195,053.5
I	8,240,421.0	6.0	429,111.0	288,866.0	2.9	2,595,282.0	8.2	5,102,835.0	5.4	-175,672.0
II	8,528,752.0	5.0	444,126.0	315,211.0	9.7	2,683,104.0	5.5	5,283,386.0	5.1	-197,075.0
III	8,541,490.0	4.9	444,789.0	271,561.0	-0.1	2,675,413.0	5.9	5,351,880.0	5.2	-202,153.0
IV	8,744,937.0	3.9	455,383.0	337,583.0	12.2	2,667,866.0	3.5	5,489,418.0	4.1	-205,314.0
2007	8,798,342.3	3.3	458,426.0	310,550.0	2.4	2,707,456.0	2.0	5,552,078.8	4.6	-230,168.3
I	8,479,625.0	2.9	441,820.0	293,196.0	1.5	2,660,222.0	2.5	5,290,230.0	3.7	-205,842.0
II	8,778,590.0	2.9	457,397.0	326,289.0	3.5	2,723,981.0	1.5	5,496,255.0	4.0	-225,333.0
III	8,849,592.0	3.6	461,096.0	281,964.0	3.8	2,730,404.0	2.1	5,618,617.0	5.0	-242,489.0
IV	9,085,562.0	3.9	473,391.0	340,751.0	0.9	2,715,217.0	1.8	5,803,213.0	5.7	-247,009.0
2008	8,929,455.5	1.5	465,257.5	314,300.8	1.2	2,692,074.8	-0.6	5,721,492.0	3.1	-263,669.8
I	8,698,038.0	2.6	453,200.0	286,701.0	-2.2	2,672,851.0	0.5	5,538,452.0	4.7	-253,166.0
II	9,040,647.0	3.0	471,051.0	337,370.0	3.4	2,759,324.0	1.3	5,741,788.0	4.5	-268,886.0
III	8,994,895.0	1.6	468,667.0	283,681.0	0.6	2,692,662.0	-1.4	5,816,280.0	3.5	-266,395.0
IV	8,984,242.0	-1.1	468,112.0	349,451.0	2.6	2,643,462.0	-2.6	5,789,448.0	-0.2	-266,232.0
2009 p/	8,345,648.5	-6.5	434,839.3	320,040.8	1.8	2,496,011.0	-7.3	5,342,317.5	-6.6	-247,559.8
I	8,013,977.0	-7.9	417,558.0	287,096.0	0.1	2,416,358.0	-9.6	5,136,346.0	-7.3	-243,381.0
II	8,139,317.0	-10.0	424,088.0	348,802.0	3.4	2,453,219.0	-11.1	5,155,600.0	-10.2	-242,393.0
III	8,448,990.0	-6.1	440,224.0	287,349.0	1.3	2,522,487.0	-6.3	5,453,861.0	-6.2	-254,930.0
IV	8,780,310.0	-2.3	457,487.0	356,916.0	2.1	2,591,980.0	-1.9	5,623,463.0	-2.9	-249,535.0
2010 2/	8,556,015.0	5.9	445,800.0	323,529.5	1.8	2,596,064.0	6.6	5,435,320.0	5.6	-244,698.5
I	8,358,114.0	4.3	435,489.0	281,668.0	-1.9	2,547,909.0	5.4	5,333,183.0	3.8	-240,135.0
II	8,753,916.0	7.6	456,111.0	365,391.0	4.8	2,644,219.0	7.8	5,537,457.0	7.4	-249,262.0

Nota: Variaciones porcentuales respecto al mismo trimestre del año anterior.

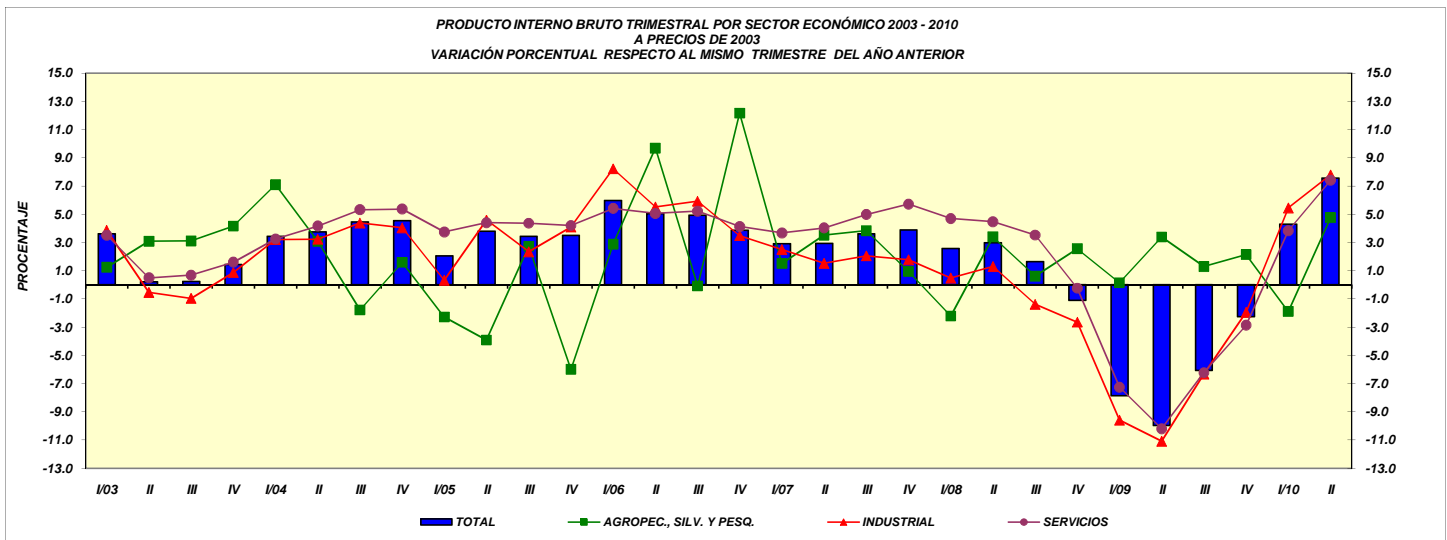
a/ La suma de las cifras parciales puede no coincidir con el total debido al redondeo.

p/ Cifras preliminares a partir de la fecha que se indica.

1/ Se engloba aquí, la actividad pública y privada desarrollada por el Sistema Bancario, para la que se procedió a efectuar las imputaciones pertinentes, tal como lo recomiendan las convenciones internacionales. Ello da origen a la creación de una cuenta "ficticia", que se inserta al final de las cuentas de producción y es utilizada como un mecanismo de ajuste de los valores totales del consumo intermedio y del producto generado por la economía en su conjunto.

2/ Cifras durante el segundo trimestre del año.

FUENTE: Servicio de Información Agroalimentaria y Pesquera, SAGARPA, con información del INEGI. Sistema de Cuentas Nacionales de México. (Sitio del INEGI en Internet: www.inegi.gob.mx).



PRODUCTO INTERNO BRUTO DEL SECTOR PRIMARIO */
(MILLONES DE PESOS A PRECIOS DE 2003)

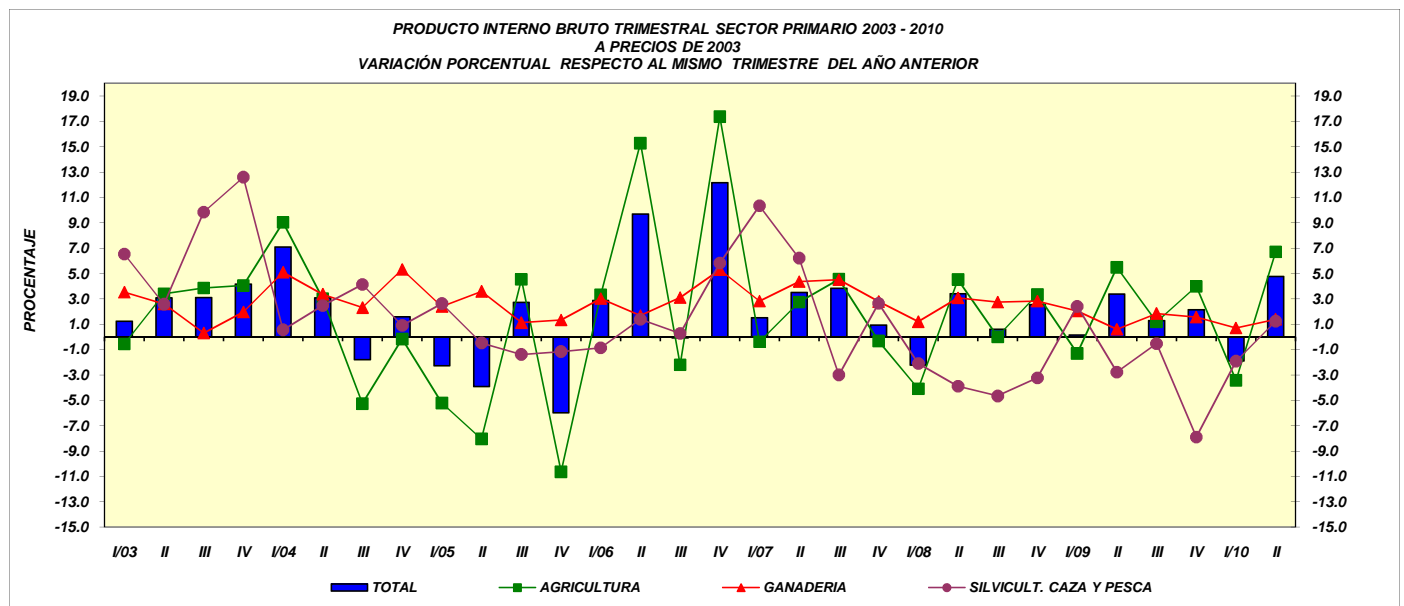
AÑO	TOTAL **/ a/		AGRICULTURA		GANADERIA		SILVICULT. CAZA Y PESCA 1/	
	PIB	VAR. %	PIB	VAR. %	PIB	VAR. %	PIB	VAR. %
2003	285,751.5	2.9	170,935.8	2.7	89,440.8	2.0	25,375.3	8.0
I	268,302.0	1.2	162,942.0	-0.6	82,611.0	3.5	22,749.0	6.5
II	290,165.0	3.1	178,999.0	3.4	86,812.0	2.6	24,355.0	2.6
III	269,379.0	3.1	151,614.0	3.9	93,113.0	0.3	24,652.0	9.8
IV	315,160.0	4.2	190,188.0	4.1	95,227.0	2.0	29,745.0	12.6
2004	292,805.8	2.5	173,898.5	1.7	93,027.3	4.0	25,880.0	2.0
I	287,350.0	7.1	177,649.0	9.0	86,824.0	5.1	22,877.0	0.6
II	299,113.0	3.1	184,423.0	3.0	89,733.0	3.4	24,957.0	2.5
III	264,575.0	-1.8	143,640.0	-5.3	95,264.0	2.3	25,671.0	4.1
IV	320,185.0	1.6	189,882.0	-0.2	100,288.0	5.3	30,015.0	0.9
2005	285,239.5	-2.6	164,457.8	-5.4	94,955.8	2.1	25,825.8	-0.2
I	280,783.0	-2.3	168,396.0	-5.2	88,907.0	2.4	23,479.0	2.6
II	287,385.0	-3.9	169,593.0	-8.0	92,954.0	3.6	24,839.0	-0.5
III	271,803.0	2.7	150,152.0	4.5	96,333.0	1.1	25,317.0	-1.4
IV	300,987.0	-6.0	169,690.0	-10.6	101,629.0	1.3	29,668.0	-1.2
2006	303,305.3	6.3	178,878.3	8.8	98,116.5	3.3	26,310.8	1.9
I	288,866.0	2.9	173,991.0	3.3	91,598.0	3.0	23,276.0	-0.9
II	315,211.0	9.7	195,506.0	15.3	94,522.0	1.7	25,184.0	1.4
III	271,561.0	-0.1	146,849.0	-2.2	99,326.0	3.1	25,386.0	0.3
IV	337,583.0	12.2	199,167.0	17.4	107,020.0	5.3	31,397.0	5.8
2007	310,550.0	2.4	181,566.0	1.5	101,662.0	3.6	27,321.8	3.8
I	293,196.0	1.5	173,326.0	-0.4	94,186.0	2.8	25,684.0	10.3
II	326,289.0	3.5	200,889.0	2.8	98,650.0	4.4	26,749.0	6.2
III	281,964.0	3.8	153,528.0	4.5	103,810.0	4.5	24,626.0	-3.0
IV	340,751.0	0.9	198,521.0	-0.3	110,002.0	2.8	32,228.0	2.6
2008	314,300.8	1.2	183,729.3	1.2	104,191.8	2.5	26,379.8	-3.4
I	286,701.0	-2.2	166,238.0	-4.1	95,317.0	1.2	25,146.0	-2.1
II	337,370.0	3.4	209,975.0	4.5	101,686.0	3.1	25,709.0	-3.9
III	283,681.0	0.6	153,546.0	0.0	106,656.0	2.7	23,479.0	-4.7
IV	349,451.0	2.6	205,158.0	3.3	113,108.0	2.8	31,185.0	-3.2
2009 p/	320,040.8	1.8	188,569.8	2.6	105,765.5	1.5	25,705.3	-2.6
I	287,096.0	0.1	164,081.0	-1.3	97,263.0	2.0	25,752.0	2.4
II	348,802.0	3.4	221,507.0	5.5	102,300.0	0.6	24,995.0	-2.8
III	287,349.0	1.3	155,368.0	1.2	108,627.0	1.8	23,354.0	-0.5
IV	356,916.0	2.1	213,323.0	4.0	114,872.0	1.6	28,720.0	-7.9
2010 2/	323,529.5	1.8	197,411.5	2.4	100,836.0	1.1	25,282.5	-0.4
I	281,668.0	-1.9	158,459.0	-3.4	97,950.0	0.7	25,260.0	-1.9
II	365,391.0	4.8	236,364.0	6.7	103,722.0	1.4	25,305.0	1.2

**/ Las cifras ubicadas en las columnas de variación porcentual corresponden a la participación relativa de cada rama en el total del Sector Primario.

1/ Aprovechamiento forestal; pesca, caza y captura; servicios relacionados con las actividades agropecuarias y forestales

2/ Cifras durante el segundo trimestre del año.

FUENTE: Servicio de Información Agroalimentaria y Pesquera, SAGARPA, con información del INEGI. Sistema de Cuentas Nacionales de México.
(Sitio del INEGI en Internet: www.inegi.gob.mx).



PRODUCTO INTERNO BRUTO TRIMESTRAL DEL SECTOR AGROALIMENTARIO
(MILLONES DE PESOS A PRECIOS DE 2003)

AÑO	TRIMESTRE	AGROALIMENTARIO a/		AGROPEC., SILV. Y PESQ.		ALIM. BEB. Y TABACO	
		PIB	VAR. %	PIB	VAR. %	PIB	VAR. %
2003		663,253.8	2.0	285,751.5	2.9	377,502.3	1.3
	I	643,939.0	1.5	268,302.0	1.2	375,637.0	1.6
	II	666,497.0	1.3	290,165.0	3.1	376,332.0	0.0
	III	640,488.0	2.2	269,379.0	3.1	371,109.0	1.5
	IV	702,091.0	3.0	315,160.0	4.2	386,931.0	2.1
2004		685,838.8	3.4	292,805.8	2.5	393,033.0	4.1
	I	678,349.0	5.3	287,350.0	7.1	390,999.0	4.1
	II	692,434.0	3.9	299,113.0	3.1	393,321.0	4.5
	III	649,431.0	1.4	264,575.0	-1.8	384,856.0	3.7
	IV	723,141.0	3.0	320,185.0	1.6	402,956.0	4.1
2005		692,228.3	0.9	285,239.5	-2.6	406,988.8	3.6
	I	683,928.0	0.8	280,783.0	-2.3	403,145.0	3.1
	II	701,257.0	1.3	287,385.0	-3.9	413,872.0	5.2
	III	672,135.0	3.5	271,803.0	2.7	400,332.0	4.0
	IV	711,593.0	-1.6	300,987.0	-6.0	410,606.0	1.9
2006		721,377.5	4.2	303,305.3	6.3	418,072.3	2.7
	I	702,760.0	2.8	288,866.0	2.9	413,894.0	2.7
	II	736,639.0	5.0	315,211.0	9.7	421,428.0	1.8
	III	684,990.0	1.9	271,561.0	-0.1	413,429.0	3.3
	IV	761,121.0	7.0	377,583.0	12.2	423,538.0	3.1
2007		739,413.3	2.5	310,550.0	2.4	428,863.3	2.6
	I	719,530.0	2.4	293,196.0	1.5	426,334.0	3.0
	II	761,031.0	3.3	326,289.0	3.5	434,742.0	3.2
	III	703,444.0	2.7	281,964.0	3.8	421,480.0	1.9
	IV	773,648.0	1.6	340,751.0	0.9	432,897.0	2.2
2008		750,379.8	1.5	314,300.8	1.2	436,079.0	1.7
	I	722,365.0	0.4	286,701.0	-2.2	435,664.0	2.2
	II	780,297.0	2.5	337,370.0	3.4	442,927.0	1.9
	III	713,091.0	1.4	283,681.0	0.6	429,410.0	1.9
	IV	785,766.0	1.6	349,451.0	2.6	436,315.0	0.8
2009 p/		756,232.3	0.8	320,040.8	1.8	436,191.5	0.0
	I	723,453.0	0.2	287,096.0	0.1	436,357.0	0.2
	II	783,337.0	0.4	348,802.0	3.4	434,535.0	-1.9
	III	718,077.0	0.7	287,349.0	1.3	430,728.0	0.3
	IV	800,062.0	1.8	356,916.0	2.1	443,146.0	1.6
2010 1/		761,015.0	1.0	323,529.5	1.8	437,485.5	0.5
	I	716,462.0	-1.0	281,668.0	-1.9	434,794.0	-0.4
	II	805,568.0	2.8	365,391.0	4.8	440,177.0	1.3

NOTA: Variaciones porcentuales respecto al mismo trimestre del año anterior.

a/ La suma de las cifras parciales puede no coincidir con el total debido al redondeo.

p/ Cifras preliminares a partir de la fecha que se indica.

1/ Cifras durante el segundo trimestre del año.

FUENTE: Servicio de Información y Estadística Agroalimentaria y Pesquera, SAGARPA, con información del INEGI.

(Sitio del INEGI en Internet: www.inegi.gob.mx).

